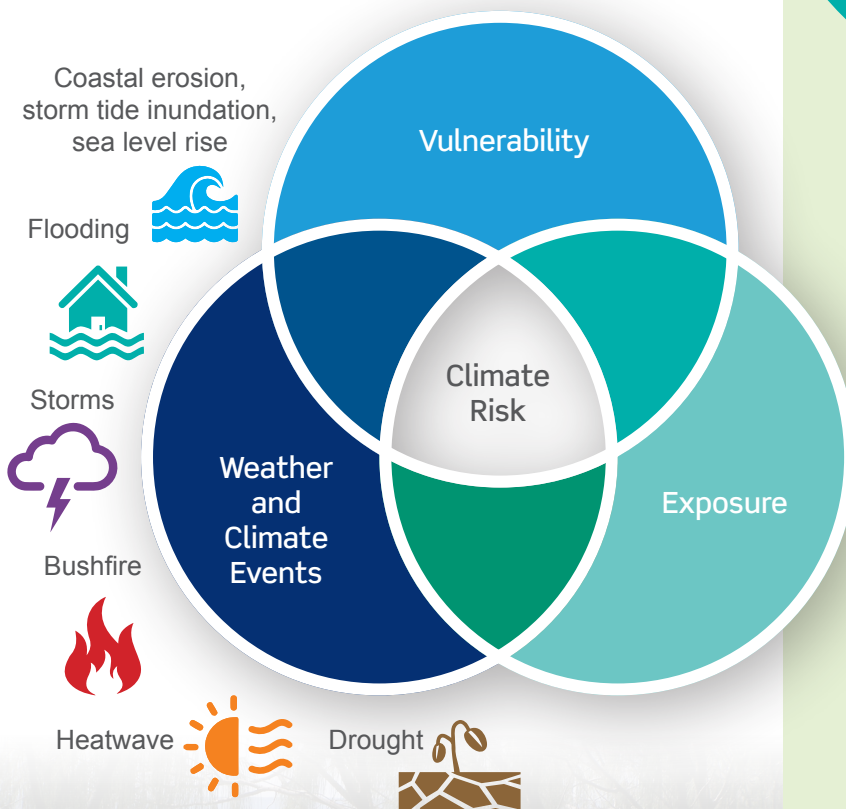


# What are climate risks?

## Regional Climate Action Roadmap

Creating our climate ready future

Noosa Council and Sunshine Coast Council are working together to better understand how different climate risks impact their ability to provide services. This is important, as our community relies on the services that the Councils provides – whether that is to build and maintain local roads, collect and manage waste, run our libraries, manage community groups such as Bushcare – among many others. Climate change can compromise the Councils' ability to deliver these services.



Climate risk is 'the potential for adverse consequences of a climate related hazard...on lives, livelihoods, health and well-being, ecosystems and species, economic, social and cultural assets, services (including ecosystem services), and infrastructure'.

Source: IPCC Glossary - Global Warming of 1.5 °C (ipcc.ch)

### Climate risk results from exposure and vulnerability to hazardous and extreme weather events

**Exposure** is the presence of people, activities and assets in places and settings that could be affected by a hazard. This could include:

- communities
- livelihoods
- species or ecosystems
- environmental functions
- services
- resources
- infrastructure
- economic, social or cultural assets

**Vulnerability** refers to characteristics of people, activities and assets which would make them more likely to be impacted by a hazard or might make the impacts worse. For example, people might be vulnerable because of their age or health status, because of their income or insecure employment, because they live remotely or are new to a region, because they live with serious pollution or in a degraded environment, or because they don't have reliable access to telecommunications or transport.

Climate change is **not** just an environmental problem



## An example of climate risks faced by Councils – the case of transport services

Councils build and maintain local roads, support their communities to use active and public transport and use the road network to deliver services to the region. Here are some examples of how one climate hazard – heatwaves – might affect this Council service:

- Physical infrastructure may need to be repaired or replaced more frequently
- It will cost Council more to maintain, repair, and replace local roads that have been impacted by heat. There may be times when bus stops, walking paths and cycling routes may be too hot for safe use
- Services may be disrupted due to health and safety concerns for maintenance staff and other road network users
- Council may have to close roads or restrict the use of roads to avoid serious road damage in heatwaves.
- People are likely to switch from active and public transport to driving, increasing congestion on roads
- Road closures may impact on other Council services such as waste collection
- Disruptions may impact on our local businesses, residents and tourists

We can manage the risks created from heatwaves by reducing the number of people, assets and activities that are exposed to heat, as well as reducing their vulnerability to the impacts. For example, we could make changes to our maintenance program activities to protect our staff from work in high temperatures, repair roads with



more heat tolerant surfaces, and advocate for climate-resilient design of local public transport networks to ensure vulnerable members of our community can still access the services they need as temperatures rise.

## What are our Councils doing?

To start addressing impacts to both Council services and to the community, Noosa Council and Sunshine Coast Council have developed a Regional Climate Action Roadmap. The Roadmap outlines a way forward for our collaborative partnership as Councils, and our commitment to working with the community, key sectors, and other levels of government to build our shared vision of a climate-ready region. We aim to develop creative solutions that leverage opportunities for a low-carbon and climate-resilient future. The Roadmap is the start of a longer journey to address climate change and associated impacts.

**Read the full Roadmap on the Council websites here:**

[www.noosa.qld.gov.au/climate-action-roadmap](http://www.noosa.qld.gov.au/climate-action-roadmap)

[www.sunshinecoast.qld.gov.au/Environment/Sustainability-and-Climate-Change/Climate-Change](http://www.sunshinecoast.qld.gov.au/Environment/Sustainability-and-Climate-Change/Climate-Change)